

GENERAL NOTES

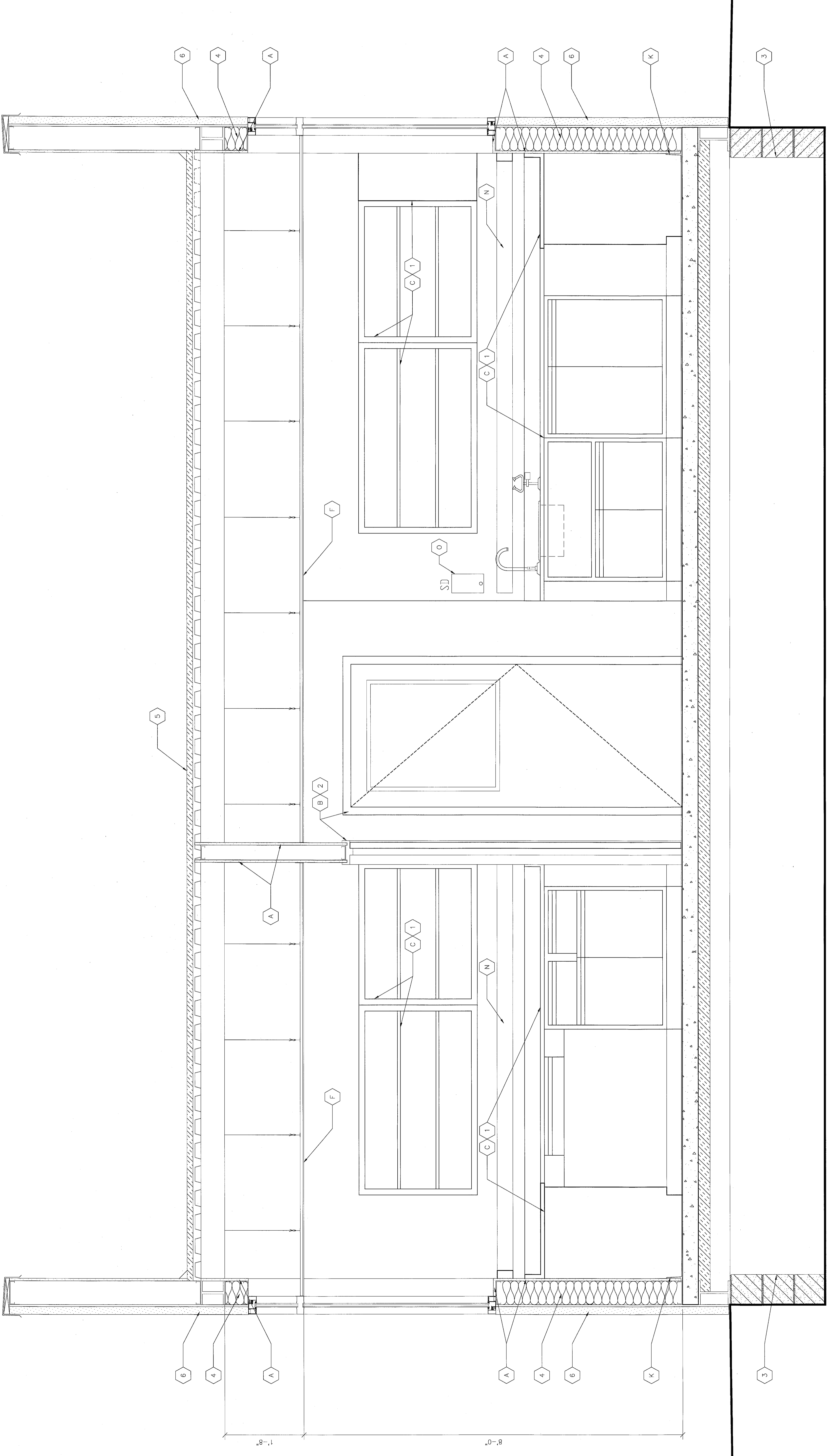
1. REMOVE ALL EXISTING PAPER FACED GYPSUM BOARD PER OWNER'S MOST ABILITY CONSULTANT'S RECOMMENDATIONS. METAL STUD WALL SYSTEM TO REMAIN INTACT.
2. EXTEND ALL INTERIOR WALLS AND INTERIOR SHEATHING OF EXTERIOR WALLS TO STEEL DECK ABOVE. PROVIDE AIRTIGHT SEAL OF ALL INTERIOR AND EXTERIOR WALLS TO STEEL DECK ABOVE AND FLOOR SLAB BELOW.
3. PROVIDE AIRTIGHT SEAL OF ALL EXISTING AND NEW FLOOR, WALL, CEILING AND ROOF PENETRATIONS.
4. PROVIDE AIRTIGHT SEAL AT THE CONNECTION OF NEW GYPSUM WALL BOARD/GYPSUM CEILING TO EXISTING WINDOW FRAMES.
5. PROVIDE SLANT AT PERIMETER OF ALL WALL HUNG CASEWORK.

DEMOLITION CODED NOTES

1. CAREFULLY REMOVE EXISTING GYPSUM WALL BOARD PER OWNER'S MOST ABILITY CONSULTANT'S RECOMMENDATIONS. METAL STUD WALL SYSTEM TO REMAIN INTACT.
2. REMOVE ALL EXISTING DOORS AND ASSOCIATED FRAMES. METAL STUD WALL SYSTEM TO REMAIN INTACT.
3. UNINSTALL, CLEAN AND STORE EXISTING LABORATORY CASEWORK FOR REINSTALLATION.
4. DISCONNECT AND MOVE BIOLOGICAL-SAFETY CABINET TO CENTER OF ROOM. PROTECT EQUIPMENT DURING CONSTRUCTION. MOVE AND RECONNECT/REINSTALL. GYPSUM BOARD WALL BEHIND CABINETS HAS BEEN REPAIRED.
5. REMOVE EXISTING LOCKERS. CLEAN AND STORE FOR REINSTALLATION.
6. REMOVE EXISTING SUSPENDED GYPSUM BOARD CEILING SYSTEM PER OWNER'S MOST ABILITY CONSULTANT'S RECOMMENDATIONS. REMOVE ASSOCIATED CEILING SYSTEM SUPPORTED LIGHTS, EXIT SIGNS, PAGING SYSTEM SPEAKERS, AND OTHER ACCESSORIES. REMOVE EXISTING SPRINKLER HEADS BACK TO MAIN TRUNKS, AS INDICATED ON MEP DRAWINGS. REMOVE, CLEAN AND STORE EXISTING SECURITY SYSTEM CAMERAS, PROTECT/RETAIN EXISTING SPRINKLER HEADS.
7. REMOVE EXISTING SUSPENDED ACOUSTICAL TILE CEILING SYSTEM AND SUPPORTS. REMOVE EXISTING LIGHTS AND RETURN GRATES AND SECURITY SYSTEM CAMERAS. PROTECT/RETAIN EXISTING SPRINKLER HEADS.
8. REMOVE, CLEAN AND STORE EXISTING SECURITY SYSTEM CAMERAS AND DOOR CONTROLS FOR REINSTALLATION.
9. REMOVE EXISTING SINKER, STAL, CURB, INTEGRAL COVE BASE, CURTAINS, CURTAIN RODS, SINKER CONTROLS, SHOWERHEAD AND GYPSUM WALL BOARD SUBSTRATE. METAL STUD WALL SYSTEM TO REMAIN INTACT.
10. PROTECT EXISTING AUTOCLAVE AND WALL PENETRATION SEAL DURING INTERIOR FINISHES CONSTRUCTION.
11. REMOVE EXISTING INTEGRAL COVE BASE AND PREP SURFACE FOR INSTALLATION OF NEW EPOXY FLOOR AND METAL BASE SYSTEM.
12. REMOVE EXISTING INTERIOR WINDOW. METAL STUD WALL SYSTEM TO REMAIN INTACT.
13. REMOVE, CLEAN AND STORE EXISTING WATER CLOSET AND REINSTALLATION, AS INDICATED ON PLUMBING DRAWINGS.
14. REMOVE, CLEAN AND STORE EXISTING SURFACE MOUNTED ELECTRICAL RACEWAY (LUMINOUS) FOR REINSTALLATION, AS INDICATED ON ELECTRICAL DRAWINGS.
15. REMOVE, CLEAN AND STORE EXISTING SURFACE-MOUNTED, ARCHITECTURAL SPECIALTIES AND TOILET ACCESSORIES (PAPER TOWEL DISPENSER, TOILET TISSUE DISPENSER, SOAP DISPENSER, ETC.)

CONSTRUCTION CODED NOTES

1. REINSTALL EXISTING LABORATORY CASEWORK.
2. PROVIDE NEW DOORS, FRAMES, HARDWARE SEALS AND GASKETS FOR ALL EXISTING OPENINGS WITHIN PROJECT AREA.
3. SEE MECHANICAL DRAWINGS FOR ADDED CRAWL SPACE VENTILATION.
4. PROVIDE NEW R-19 CELLULOSE FREE BATT INSULATION-TYPICAL @ ALL EXTERIOR WALLS. CONTRACTOR TO CONSULT WITH INSULATION MANUFACTURER TO INSPECT THE INTERIOR SURFACE OF THE EXTERIOR SHEATHING PRIOR TO INSTALLATION OF NEW INSULATION.
5. EXISTING ROOFING SYSTEM TO REMAIN. PROVIDE NEW ROOF CURBS & ROOF PENETRATIONS IN COMPLIANCE WITH ROOFING MANUFACTURER RECOMMENDATIONS.
6. EXISTING EPS SYSTEM AND EXTERIOR SHEATHING TO REMAIN. SEE ALTERNATES.
7. EXISTING WIRE SHELVING - REMOVE & REINSTALL UPON COMPLETION OF THE PROJECT.
8. REINSTALL LOCKERS
9. PROVIDE CELLULOSE FREE SUSPENDED GYPSUM BOARD CEILING SYSTEM WITH COVERED TRANSITIONS AT ALL WALLS.
10. PROVIDE CELLULOSE FREE MOISTURE RESISTANT GYPSUM BOARD CEILING SYSTEM WITH COVERED TRANSITIONS AT ALL WALLS.



1 BUILDING SECTION  
1"=1'-0"