

BSL-3 LABORATORY RENOVATION
STATE LABORATORY FOR THE ALABAMA
PUBLIC HEALTHCARE AUTHORITY
 MONTGOMERY, ALABAMA

KARLSBERGER PROJECT NO.
60-0007AA-000
 ISSUE DATE

SHEET INFORMATION
 CURRENT DATE
01/23/09
 REVISIONS

SHEET TITLE
REFLECTED CEILING PLAN
EXISTING

SCALE
1/4"=1'-0"
 SHEET NO.
A1
03

CEILING LEGEND

	RECESSED FLUORESCENT LIGHT FIXTURES
	SURFACE MOUNTED FLUORESCENT LIGHT FIXTURES
	AIR DIFFUSERS
	SLOT AIR DIFFUSERS
	RETURN AIR GRILLES
	SMOKE DETECTOR
	REMOTE INDICATOR
	ACOUSTICAL CEILING
	TRACK (AS NOTED)
	TYPE = SEE PROJECT MANUAL
	ACCESS PANEL
	CAMERA
	SPEAKER
	SPRINKLER HEADS
	COMMAND

FOR GRID TYPE & SIZE, SEE CEILING TYPE IN PROJECT MANUAL

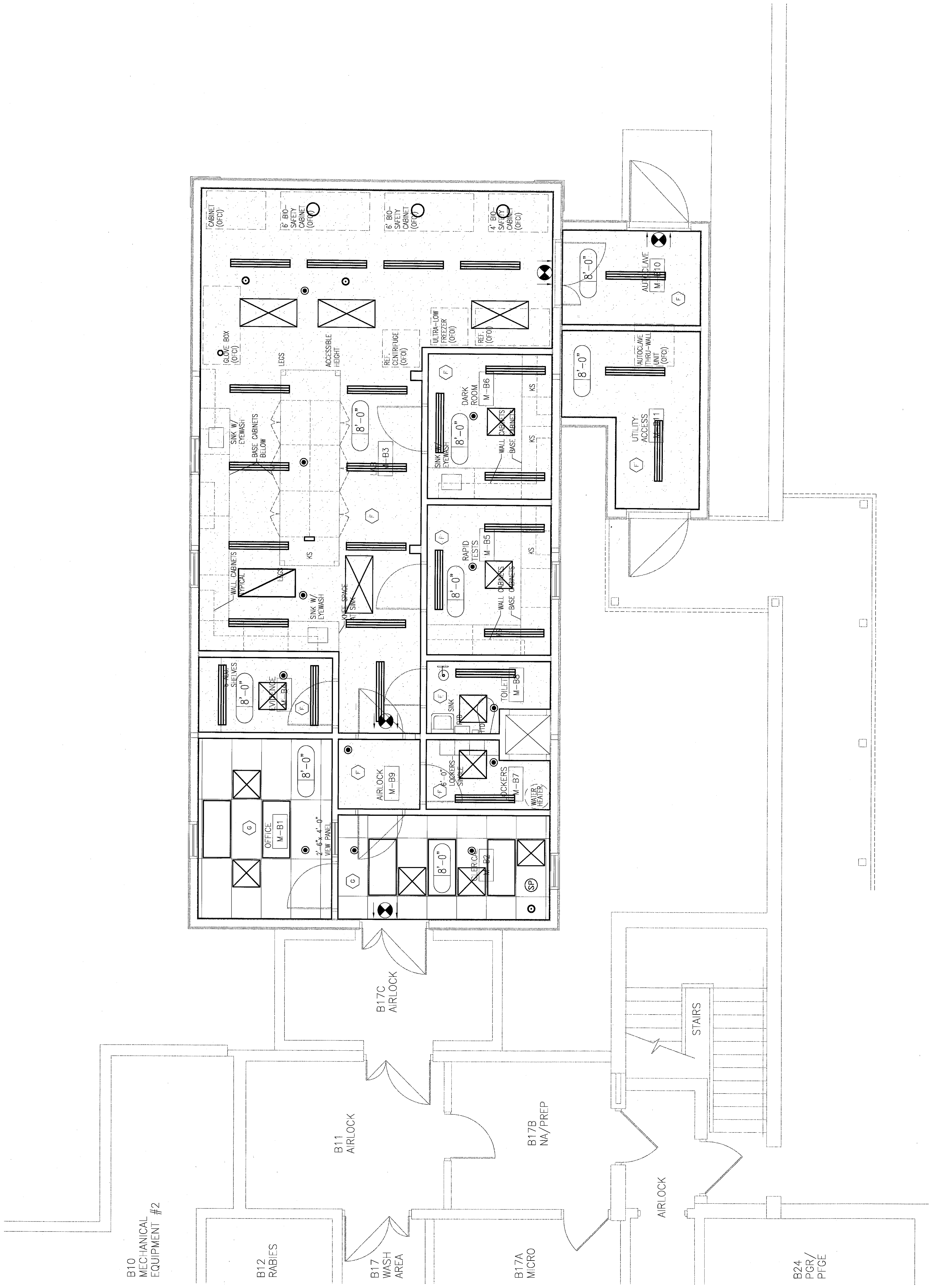
	WALLBOARD		GYPSPUM PLASTER
	EXPOSED CONSTRUCTION		CEMENT PLASTER (PAINTED)
	EXPOSED CONSTRUCTION (PAINTED)		CEMENT PLASTER

GENERAL NOTES

- REMOVE ALL EXISTING PAPER TAPED GYPSUM BOARD WITHIN PROJECT LIMITS. REPLACE WITH PAPERLESS GYPSUM WALL BOARD. USE MOISTURE RESISTANT, PAPERLESS GYPSUM BOARD IN ALL WET AREAS.
- EXTEND ALL INTERIOR WALLS AND INTERIOR SHAPING OF STAIRS TO STEEL DECK ABOVE. PROVIDE AIRTIGHT SEAL TO INTERIOR WET WALLS TO STEEL DECK ABOVE AND FLOOR SLAB BELOW.
- PROVIDE AIRTIGHT SEAL AT ALL EXISTING AND NEW FLOOR, WALL, CEILING AND ROOF PENETRATIONS.
- PROVIDE AIRTIGHT SEAL AT THE CONNECTION OF NEW GYPSUM WALL BOARD/GYPSUM CEILING TO EXISTING WINDOW FRAMES.
- PROVIDE SEALANT AT PERIMETER OF ALL WALL HUNG CASWORK.

DEMOLITION CODED NOTES

- CAREFULLY REMOVE EXISTING GYPSUM WALL BOARD PER SECTION 050500. REMOVE ALL EXISTING GYPSUM BOARD. METAL STUD WALL SYSTEM TO REMAIN INTACT.
- REMOVE ALL EXISTING DOORS AND ASSOCIATED FRAMES. METAL STUD WALL SYSTEM TO REMAIN INTACT.
- UNINSTALL, CLEAN AND STORE EXISTING LABORATORY CASWORK FOR REINSTALLATION.
- RELOCATE AND MOVE BIOLOGICAL SAFETY CABINET TO LABORATORY. REMOVE AND RECONNECT/REINSTALL BIOLOGICAL SAFETY CABINET AFTER EXISTING GYPSUM BOARD WALL BEHIND CABINET HAS BEEN REPAIRED.
- REMOVE EXISTING LOCKERS. CLEAN AND STORE FOR REINSTALLATION.
- REMOVE EXISTING SUSPENDED GYPSUM BOARD CEILING SYSTEM PER OWNER'S MOIST ABATEMENT CONSULTANT'S RECOMMENDATIONS. REMOVE ALL EXISTING GYPSUM BOARD. REMOVE SUPPORTED LIGHTS, EXT. SIGNS, PAGING SYSTEM SPEAKERS, SAFETY SHOWER, SUPPLY AND RETURN GRILLES, DUCTWORK TO REMAIN. REMOVE ALL EXISTING SECURITY SYSTEMS. REMOVE, CLEAN AND STORE EXISTING SECURITY SYSTEMS. CAMERAS. PROTECT/RETAIN EXISTING SPRINKLER HEADS.
- REMOVE EXISTING SUSPENDED ACOUSTICAL TILE CEILING SYSTEM AND ASSOCIATED LIGHTS AND SUPPLY AND RETURN GRILLES AND SECURITY SYSTEMS. PROTECT/RETAIN EXISTING SPRINKLER HEADS.
- REMOVE, CLEAN AND STORE EXISTING SECURITY SYSTEM CAMERAS AND DOOR CONTROLS FOR REINSTALLATION.
- REMOVE EXISTING SHOWER, STALL CURB, INTEGRAL CODE SHOWERHEAD AND GYPSUM WALL BOARD SUBSTRATE. METAL STUD WALL SYSTEM TO REMAIN INTACT.
- PROTECT EXISTING AUTOCAVE AND WALL PENETRATION SEAL DURING INTERIOR FINISHES CONSTRUCTION.
- REMOVE EXISTING INTEGRAL COVE BASE AND PREP EXISTING FLOOR TO RECEIVE NEW FLOOR AND INTERIOR BASE SYSTEM.
- REMOVE EXISTING INTERIOR WINDOW. METAL STUD WALL SYSTEM TO REMAIN INTACT.
- REMOVE, CLEAN AND STORE EXISTING WATER CLOSET AND LAVATORY FIXTURES FOR REINSTALLATION, AS INDICATED ON PLUMBING DRAWINGS.
- REMOVE, CLEAN AND STORE EXISTING SURFACE-MOUNTED ELECTRICAL RACEWAY (FLUOROLOY) FOR REINSTALLATION, AS INDICATED ON ELECTRICAL DRAWINGS.
- REMOVE, CLEAN AND STORE EXISTING SURFACE-MOUNTED, TOWEL DISPENSER, TOILET TISSUE DISPENSER, PAPER DISPENSER, ETC.



1 RCP EXISTING/DEMOLITION
 1/4"=1'-0"